



Sage Estimating

Better Estimates By Every Measure.

sage



Sage Estimating

Sage Estimating is powered by trade-specific cost databases, enabling you to turbo-charge takeoffs and final proposals. Input your own costs into a prebuilt database or choose a database prepopulated with costs. When your proposal is accepted, information flows automatically to Job Cost in Sage business management software, eliminating redundant tasks, data entry errors, and omissions.





Put your best bid forward.

A new day in construction has dawned.

It's tougher than ever out there. Margins are razor-thin. Schedules are ultra-aggressive. You compete against more firms on every bid. To win more work and ensure the profitability of every project, you have to build estimates with more speed and precision than ever before. One thing is certain: Yesterday's estimating methods will no longer cut it.

Sage Estimating provides a smarter, automated way to estimate. Takeoffs are faster. Final proposals are more professional. Plus it works in tandem with Sage business management software, so once a bid is accepted, information flows automatically to accounting and job cost. By eliminating redundant data-entry and error-prone processes, Sage Estimating helps projects run efficiently from initial estimate to project completion. Quite simply, it's better estimating by every measure.

Fast. Accurate. Integrated.

Speed comes easily. Sage Estimating eliminates the drudgery associated with complex calculations and manual, repetitive, and routine estimating tasks. Fire it up and the first thing you notice is the intuitive interface with familiar bid worksheets that make building estimates easy. You'll also find literally thousands of report options. Before you know it, you'll be executing processes, pricing items, querying data, and taking off a project with ease and speed. As you finalize your proposal, you'll wonder to yourself, "How can a few entry points and a series of clicks accomplish what used to take me days?" That's the power of Sage Estimating. That's putting your best bid forward, faster.

Potent

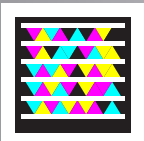
Takeoffs are turbo-charged. Choose from a variety of takeoff methods. Then simply pull individual or groups of items from a variety of industry-specific databases directly into your bid worksheet. Enter dimensions but don't blink, because quantities and prices are instantly tabulated.

Powerful

Sage Estimating is a welcome replacement for underpowered estimating solutions and generic spreadsheets. Under the hood, it's powered by a Microsoft SQL Server® database, which stores all your data in one place and processes it quickly. For starters, this means faster queries, better security, and more insightful reports.

Professional

Sage Estimating doesn't forget about style. The software makes it quick and easy to present reports and final proposals that are thoughtful, well-organized, and itemized. In other words, precisely what management and clients are looking for. Your professionalism will set your firm apart from the competition—and unlevel the playing field in your favor.



Visit gettag.mobi from your smart phone and download the free app.

Snap a photo of this image to check out the entire Port of San Diego success story.

"Without [Sage] Estimating, a recent estimate would have taken me a week because I would have had to do takeoffs and calculations. With this software, it took 20 minutes, and I was ready to publish it in a booklet for the stakeholders."

Shane Peterson | Estimator | Port of San Diego

Five ways Sage Estimating makes you faster.

- 1 Slashes takeoff time by 50% or more versus manual or generic spreadsheets methods.
- 2 Automates the process of cost item updates, eliminating the grind associated with pricing items manually.
- 3 Generates final proposals and reports in seconds.
- 4 Provides a smart way to organize and report on estimates—with fast and easy access.
- 5 Shortens the learning curve by adapting to your preferred way of working.

Quickly and easily build estimates by taking off entire construction systems at once.

Group	Phase	Description	Takeoff Quantity	Labor Cost/Unit	Labor Amount	Material Amount	Equip Amount	Total Cost/Unit	Total Amount
2100.000		SITWORK	5,000.00 sq	0.04 /sq	176	51	123	0.07 /sq	250
2143.000		Sand Fill @ Slab							
2144.000		Gravel @ Slab							
2220.250		Earthwk: Footings (Mach)							
2220.400		Shape & Grade							
3160.010		Forms: Screeds							
3160.020		Screeds							
3160.030		Screeds							

Phase	Item	Description	Quantity	Unit	Location	Bid Item
1	2220.200	10 Excavate Footing by Hand		cy		
2	2220.250	10 Excavate Footing by Machine	56.296	cy	Building A	Foundation
3	2220.500	10 Backfill Footings	22.519	cy	Building A	Foundation
4	2220.400	10 Shape & Grade Footing	4.500	sf	Building A	Foundation
5	3306.000	c 30 Footing Conc 3000 psi	33.333	cy	Building A	Foundation
6	3111.000	15 Footing Forms (Multi Use)	612.000	sf	Building A	Foundation
7	3111.000	40 Footing Steps	1.000	ea	Building A	Foundation
8	3159.000	10 Strip/Oil Forms-Footings	618.000	sf	Building A	Foundation
9	3111.000	5n Kenzie In Footing	150.000	sf	Building A	Foundation

Profitability with precision.

Make every bid a winner. The fate of every project hinges on the estimate. Miss high and your proposal will be ignored. Miss low or make a mistake and cost overruns will erode your profits or ruin your company's reputation. Sage Estimating helps you find the sweet spot while ensuring precise calculations and costs across all aspects of the bid: labor, supplies, subcontractor bids, materials, equipment, and even overhead and profit. When you think of Sage Estimating, one word ought to come to mind: bull's-eye.

Accuracy

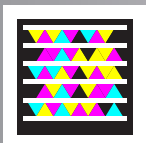
Your profitable project starts with takeoff. Several methods are available to fit your preferred style. Trade-specific databases, smart assemblies, and digital plan takeoff support do the heavy lifting for you—guiding you through as the system calculates materials, equipment, and labor prices. Automation helps eliminate costly errors such as mistyped values, mistakenly deleted formulas, and misplaced decimals.

Flexibility

Do you lose your cool on bid day if you're asked to proportionately slash the total estimate by 4 percent? With Sage Estimating, you can handle these kind of adjustments in a snap, on the fly, and with precision. Plus, you can easily modify or undo adjustments or make side-by-side comparisons right on screen.

Uniformity

When you have multiple estimators, inconsistency can be an issue—particularly if each is using a different personalized spreadsheet. With Sage Estimating, estimators have flexibility in the way they work, but the methodology is predictably consistent, eliminating pricing variations between estimators that can easily result in eroded profits.



Visit gettag.mobi from your smart phone and download the free app.

Snap a photo of this image to check out the entire Rudolph and Sletten success story.

“With regular spreadsheet software, manual recalculation can lead to a catastrophic error on an estimate. Our [Sage] Estimating Solution provides us with safeguards against these costly mistakes.”

Todd Ahern | Senior Estimator | Rudolph and Sletten

5 Five ways Sage Estimating improves accuracy.

- 1 Uses up-to-date, trade-specific cost databases for final numbers you can trust.
- 2 Eliminates manual calculations and reduces the risk of overlooked items—some of the most common causes of errors.
- 3 Enables you to make last-minute changes with quick precision.
- 4 Standardizes the bid process across multiple estimators without forfeiting individual styles and flexibility.
- 5 Removes spreadsheet liabilities—such as hidden cells and broken formulas.

Compare estimates side by side either onscreen or from a printed report.

The screenshot displays the Sage Estimating software interface. The top window shows a menu bar with options like Home, Database, Interface, and View, along with a ribbon containing various tools such as New, Open, Settings, Paste, Cut, Copy, Undo, Redo, Quick, Assembly, Calculator, Layout, Combine, Adjust Column, Reprice, and Help.

The main window displays a table titled "McKenzie Oaks - Phase 2 - TUG_ESTIMATES - [(local)\SAGE_ESTIMATING]". The table has columns for Group, Phase, Description, Takeoff Quantity, Labor Cost/Unit, Labor Amount, Material Amount, Equip Amount, Total Cost/Unit, and Total Amount. The data is organized into sections for SITEWORK and CONCRETE, with sub-items like Forms: Footings, Forms: Edgeform Slabs, Forms: Edgeform at Walks, Forms: Screeds, Wiremesh, and Conc: Footings.

Overlaid on the bottom right is a "Variance Report" for "McKenzie Oaks" dated 5/12/2011 1:53 PM. This report compares two estimates: "McKenzie Oaks" and "McKenzie Oaks - Phase 2". It lists items and descriptions, and provides columns for Material Amount, Total Amount, and Variance for both estimates. The report shows significant variances, particularly in the CONCRETE section, with a total variance of (2,210).

Group	Phase	Description	Takeoff Quantity	Labor Cost/Unit	Labor Amount	Material Amount	Equip Amount	Total Cost/Unit	Total Amount
2100.000		SITWORK							
3000.000		CONCRETE	5,000.00 sq	0.04 /sq	220	64	154	0.00	437
3111.000		Forms: Footings							
3127.000		Forms: Edgeform Slabs							
3130.010		Forms: Edgeform at Walks							
3160.010		Forms: Screeds							
3226.000		Wiremesh							
3306.000		Wiremesh - 6x6 10/10							
		Conc: Footings							
		Footings Conc 3000 psi							
		Footings Conc 4000 psi							

Item	Description	Material Amount			Total Amount		
		McKenzie Oaks	McKenzie Oaks - Phase 2	Variance	McKenzie Oaks	McKenzie Oaks - Phase 2	Variance
CONCRETE							
3111.000	Forms: Footings	288	300	(12)	423	528	(105)
	50 Keyway In Footing	85	108	(22)	127	158	(32)
	50 One-time Item - TEST SUB	-	-	-	45	55	(11)
	Forms: Footings	374	497	(93)	594	743	(149)
3127.000	Forms: Edgeform Slabs						
	10 EdgeForm (Any Dept. LF)	223	279	(56)	1,876	2,345	(469)
	Forms: Edgeform Slabs	223	279	(56)	1,876	2,345	(469)
3130.010	Forms: Edgeform at Walks						
	10 EdgeForm-Walks	144	180	(36)	1,156	1,445	(289)
	10 EdgeForm-Walks	118	144	(26)	925	1,156	(231)
	Forms: Edgeform at Walks	52	65	(13)	415	520	(104)
	Forms: Screeds	311	389	(78)	2,496	3,122	(624)
3160.010	Forms: Screeds						
	10 Screeds	85	108	(21)	376	470	(94)
	10 Screeds	38	47	(9)	187	209	(22)
	10 Screeds	12	15	(3)	52	65	(13)
	Forms: Screeds	134	167	(33)	596	745	(149)
3226.000	Wiremesh						
	w 30	10	12	(2)	45	58	(12)
3306.000	Wiremesh						
	w 30	10	12	(2)	45	58	(12)
3006.000	Conc: Footings	2,045	2,558	(511)	2,420	3,024	(605)
	0 30	85	108	(22)	127	158	(32)
	Footings Conc 3000 psi	2,740	3,425	(685)	3,228	4,035	(807)
	0 40						
	Conc: Footings	2,045	2,558	(511)	2,420	3,024	(605)
	Footings Conc 4000 psi	85	108	(22)	127	158	(32)
	Conc: Footings	2,740	3,425	(685)	3,228	4,035	(807)
	CONCRETE	3,792	4,740	(948)	6,838	11,047	(2,210)

Get projects on the fast track.

Connect estimating with the rest of your business. The ability to ensure continuity of your projects from initial estimate to project completion sets Sage Estimating apart from other estimating software. It works in tandem with accounting and operations management software from Sage to establish a seamless connection among everyone who works on a project—from estimators to accountants to project managers. The results? You spend less time moving information around and more time ensuring your projects and your overall business are moving smartly ahead.

Connectivity

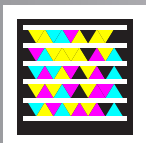
When a bid is won and project responsibility shifts hands, is the transition smooth? Does information need to be rekeyed? With the integration between Sage Estimating and our accounting software, the appropriate data feeds from estimating to accounting for job cost reporting. No data loss. No redundant entry. Nothing left to chance.

Continuity

By aligning estimating with operations, Sage Estimating keeps all team members on the same page, looking at the most current data. This helps everyone make well-informed decisions and move projects through the lifecycle from start to finish, ensuring project profitability.

Confidence

With a complete view of the business close at hand, including historical data from accounting, estimating, and job cost tracking, you can considerably improve your estimating accuracy as well as win/loss ratios. In addition, the ability to compare estimated versus actual costs in a real-time scenario can help you make quicker, well-informed decisions, keeping your projects on track and profitable.



Visit gettag.mobi from your smart phone and download the free app.

Snap a photo of this image to check out the entire Echo Pacific Construction success story.

“By using [Sage] Estimating, we have cut the costs involved in generating a complex estimate by 50% and increased the efficiency of the estimating process by at least 75%”

Chris Rowe | President | Echo Pacific Construction

Five ways Sage Estimating connects your entire business.

- 1 Shares data across estimating, job cost, and accounting functions— with no data re-entry.
- 2 Smooths the transition from estimating to job cost, ensuring projects stay on track.
- 3 Makes it easier to schedule, communicate, and confirm all project details across your team.
- 4 Provides estimators access to historical “estimated vs. actual” figures, helping improve accuracy on future bids.
- 5 Gives management fast access to cross-operational reports for informed decision-making.

The screenshot displays the Sage Estimating software interface. A 'Job Cost Export' dialog box is open, titled 'Create or add to a job cost budget from an estimate'. The dialog contains the following text:

This wizard consists of three steps:

1. Specify a job number and transaction date.
2. Select markups and rounding options.
3. Specify optional WBS or location information.

Click 'Next' to start. You can cancel at any time.

Buttons: < Back, Next >, Cancel

In the background, a data table is visible with columns for Group, Phase, Description, and various units and costs. A green callout bubble points to the table with the text:

Share data between estimating, accounting, and job cost with no data reentry or associated errors.

Group	Phase	Description	Units	Rate	Quantity	Cost	Other
2100.000	2143.000						
3000.000	3111.000	CONCRETE	cy	/cy		19,933	55,024
		Forms: Footings	sf	/sf		239	889
		Keyway In Footing	lf	/lf		149	800
		Keyway In Footing	lf	/lf		90	89
	3127.000	Forms: Edgeform Slabs	lf	/lf		3,465	468
		EdgeForm (Any Depth, LF)	lf	/lf		2,422	327
		EdgeForm (Any Depth, LF)	lf	/lf		1,043	141
	3130.010	Forms: Edgeform at Walks	lf	/lf		2,187	319
		EdgeForms-Walks	lf	/lf		1,013	148

The Sage customer experience.

We're here to help. From the moment Sage made its bold entry into the construction market over 40 years ago, we've been dedicated to helping construction companies operate more efficiently. But our heritage isn't only about software—it's about how we serve our customers. The Sage customer experience starts with our commitment to delivering personalized service and professionalism at every stage. It continues with world-class solutions and services as your business grows and changes. We respond to your needs and make your particular investment in our solutions easy, beneficial, and rewarding.

Local Expertise

Our network of authorized business partners and certified consultants understands the challenges of the construction industry. Regionally based, these experienced professionals have helped thousands of construction companies get up and running quickly on Sage Estimating software—and they provide the ongoing service you need for continued success.

Responsive Customer Support

We back our solutions with comprehensive customer support, including regular maintenance software updates, 24x7 access to an online knowledgebase, and live technical support. Added peace of mind: 92 percent of our customers rate Sage Construction and Real Estate support an 8 or higher on a 10-point scale.

Flexible Training

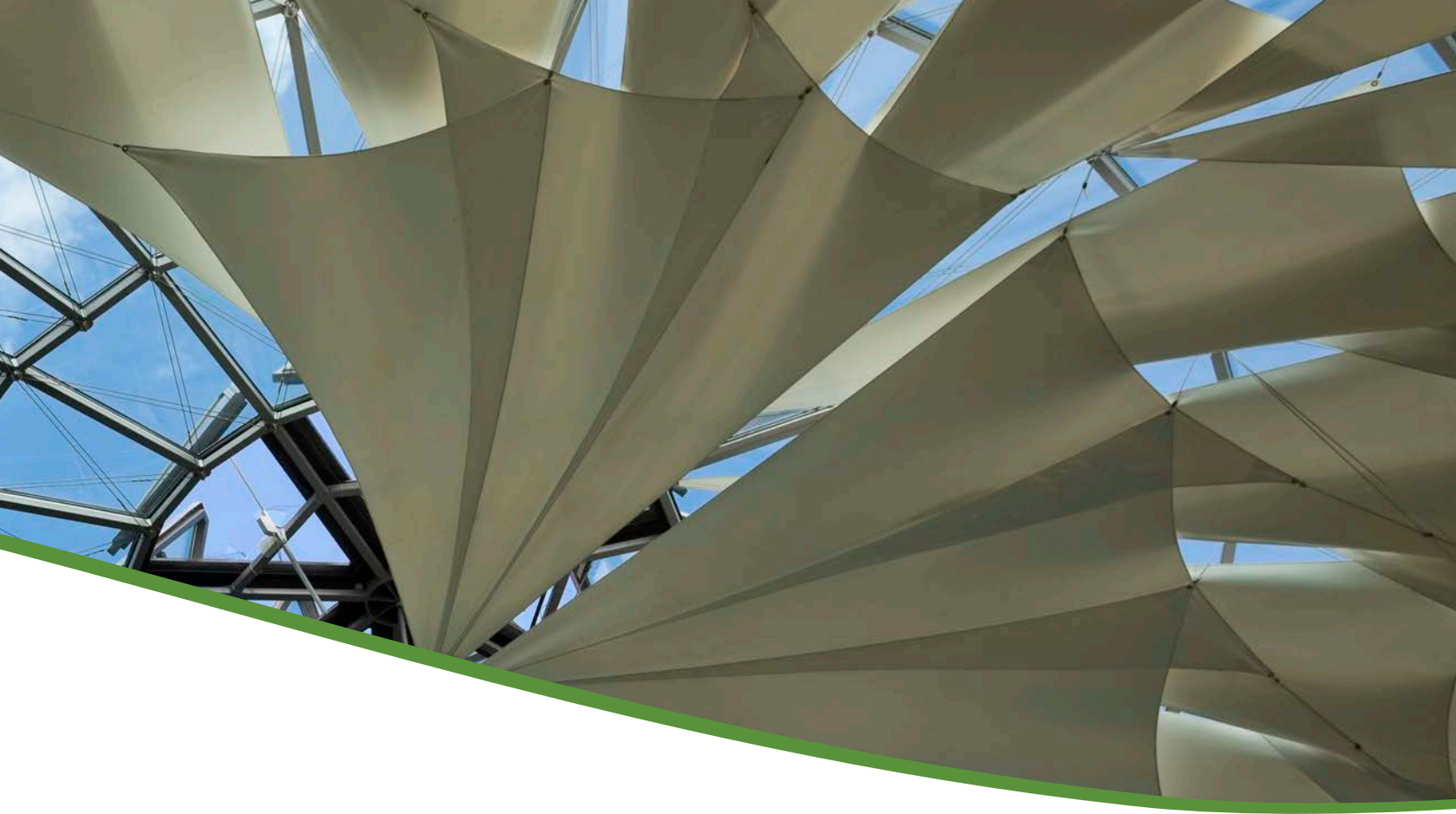
Sage and our business partners provide multiple training methods for convenience and affordability, including classroom, online instructor-led, online prerecorded Anytime Learning, web seminars, onsite or local training options, and an annual customer conference.


Professional Services

Each business has different needs. Working with our business partners, Sage supports implementation, deployment, and custom development that will make Sage Estimating the perfect fit for your business. We bring extensive product and industry experience to each partnership.

Add-on Solutions

Enhance or expand the power of Sage Estimating with add-on solutions including accounting, job cost reporting, prebuilt industry databases, and more.





**For more information about
Sage Estimating:**

Visit www.SageEstimating.com

Call **800-628-6583**

Or contact your local Sage Estimating
business partner

Sage Construction and Real Estate

15195 NW Greenbrier Parkway | Beaverton, OR 97006 | 800-628-6583 | www.SageCRE.com

©2012 Sage Software, Inc. All rights reserved. Sage, the Sage logos and the Sage product and service names mentioned herein are registered trademarks or trademarks of Sage Software, Inc., or its affiliated entities. All other trademarks are the property of their respective owners.

SPK 12-02120 07/12

20003S060701000

