



Superior Excel Integration for Sage® Timberline Office

What if you could quickly use Excel to put the following information into Sage Timberline Office?

	A	B	C	D	E	I
1	Estimate Worksheet					
2						
3	Job 09-157 - Cardiff Nuclear Facility					
8						
9						
10	Cost Code	Description	Qty	UOM	Total Estimate	Labor Amount
14	1-040	Coordination	-		55,239	55,239
20	1-510	Temp Utilities	-		2,187	2,187
27	1-580	Project Identification	-	each	167	106
29	1-710	Final Cleaning	-	sqft	41,098	39,409
34	2-075	Concrete Removal	-	cuyd	720	720
35	2-140	Dewatering	-	cuyd	57,145	30,979
40	2-220	Excavate & Backfill	1,525	cuyd	65,609	62,048
52	2-510	Asphalt Paving	380	sq	81,467	8,869
53	2-520	Cement Paving	540	ysd	6,981	2,536
69	2-900	Landscaping	-	sqft	3,250	-
73	3-110	Structural Formwork	-	sqft	21,466	16,206
74	3-130	Permanent Forms	-	sqft	3,011	2,715
75	3-210	Reinforcing Steel	25	ton	23,432	9,661
76	3-220	Welded Wire Fabric	-	sqft	23,799	16,502
78	3-250	Concrete Accessories	-	each	1,453	1,088
79	3-310	Structural Concrete	2,278	cuyd	142,723	22,219
80	3-345	Concrete Finishing	104	sq	45,482	42,976
85	3-470	Tilt-Up Precast	1,200	lnft	61,354	30,933
115	5-210	Steel Joists	-	lnft	122,302	33,730
116	5-310	Steel Decking	80,000	sqft	76,105	22,646
122	5-540	Castings	-	each	2,960	1,386
127	6-050	Fasteners	-	each	570	570
128	6-110	Wood Framing	-	bf	53,159	43,995
129	6-120	Structural Panels	-	each	95,117	66,193
147	7-190	Wanor Retarders	-	sqft	15,063	12,001

- ✓ Liability Invoices
- ✓ Recurring AR Invoices
- ✓ Cleared Checks
- ✓ Payroll Time
- ✓ Job Cost Estimates
- ✓ General Journal Entries
- ✓ Property Charges

Office Connector Import is an Excel Add-In that allows you to create files that are compatible with the various import functions in Sage Timberline Office from within Excel.

With Office Connector Import, you can organize your Excel worksheets in the way that works best for your own use. Then, with a click of a button, information from your worksheets is used to produce import files that are in the correct format needed by Sage Timberline Office applications. There is no need to modify or adapt the layout of your worksheet to accommodate the file formats needed by Sage Timberline Office.

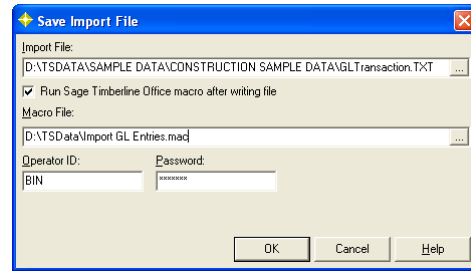
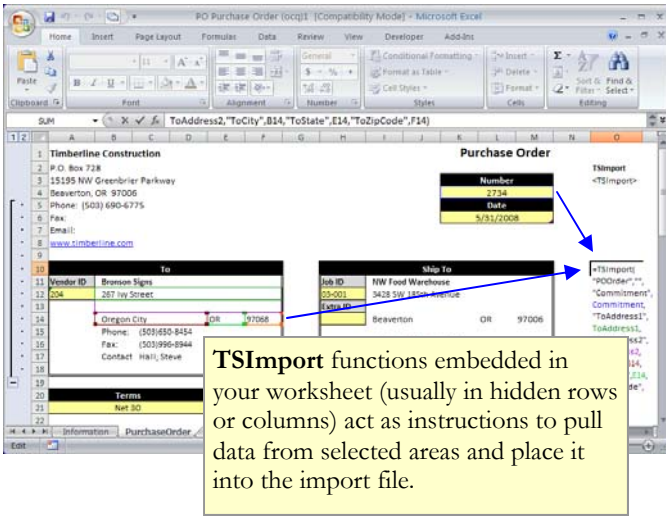
Once the Office Connector Import functions have been added to a given workbook, you can create import files over and over again with just a click of a button. There is no time lost recreating the means to produce the import files each time.

Leverage the power of Excel and Sage Timberline Office macros to create seamless import processes involving only a click of a button in Excel to create an import file from your Excel data and have it automatically imported into Sage Timberline Office.

Start developing entire spreadsheet solutions that work with your Sage Timberline Office data today!

Separating Form from Function

Have you ever tried to take data that you work with in Excel and place it into a format that can be imported by your Sage Timberline Office applications? If you have, you may know that the layout and format of your data is critical, and you must match the requirements of the Sage Timberline Office import file formats precisely. Then, converting your Excel workbook into a text file introduces additional challenges. Office Connector Import solves these problems for you by separating **form** (i.e., *the way you want to organize your data*) from **function** (i.e., *the means to put that data into an import file*).



With the click of a button on the Office Connector Import toolbar, all of the TSIImport worksheet functions are evaluated and data is placed into an import file using the filename you specify.

Optionally, if you've created a Sage Timberline Office macro to import the file, you can let Office Connector Import launch the Sage Timberline Office macro for you creating a seamless integration experience.

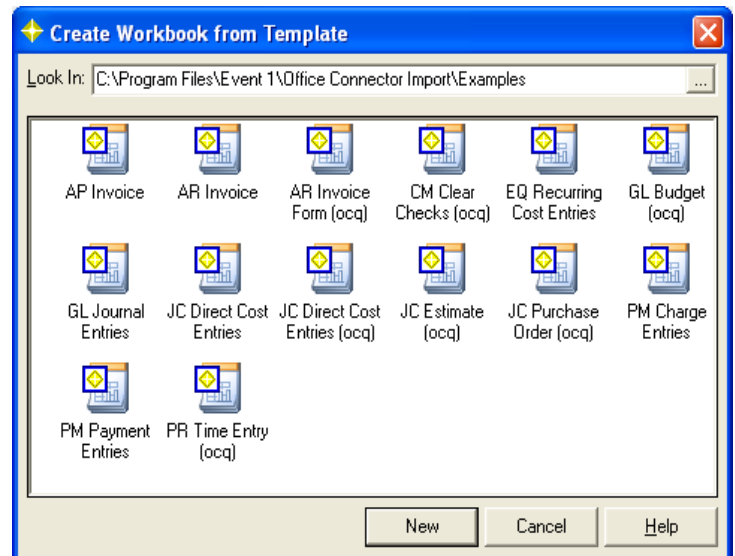
What Can Be Imported?

Office Connector Import supports each of the following Sage Timberline Office import functions:

Application	What you can import
Accounts Payable	✓ Invoices
Accounts Receivable	✓ Invoices
Cash Management	✓ Cleared Checks
Equipment Cost	✓ Cost, Revenue, Misc Qty and Meter Entries
General Ledger	✓ Budgets ✓ Transactions
Job Cost	✓ Commitments & Commitment COs ✓ Direct Costs ✓ Estimates
Payroll	✓ Time
Property Management	✓ Charges ✓ Payments

Sample Templates

A full set of example templates is provided to help you quickly visualize and experience possible applications for each of the different import file types that are supported.



System Requirements

Operating System: Microsoft Windows 2000, XP or 2003 | **Microsoft Excel:** Microsoft Excel 2002, XP, 2003 or 2007 | **Timberline:** Sage Timberline Office 8.x or 9.x | Sage Timberline Office ODBC Driver | All other system requirements as defined by Sage Timberline Office | Use of some example templates requires Office Connector Query.

Online Presentation

Contact us to attend a live online presentation and see how Event 1 Office Connector Import can address your needs.



For sales or information, contact:
Software Consultants:

Phone: (651) 748-8929
Email: DionL@sofcon.com
Website: www.sofcon.com



(360) 567-3750 / fax (360) 567-3756
Email: sales@event1software.com
Website: www.event1software.com