



**hh²
Remote
Payroll**

**Never fax a timesheet
EVER again!**

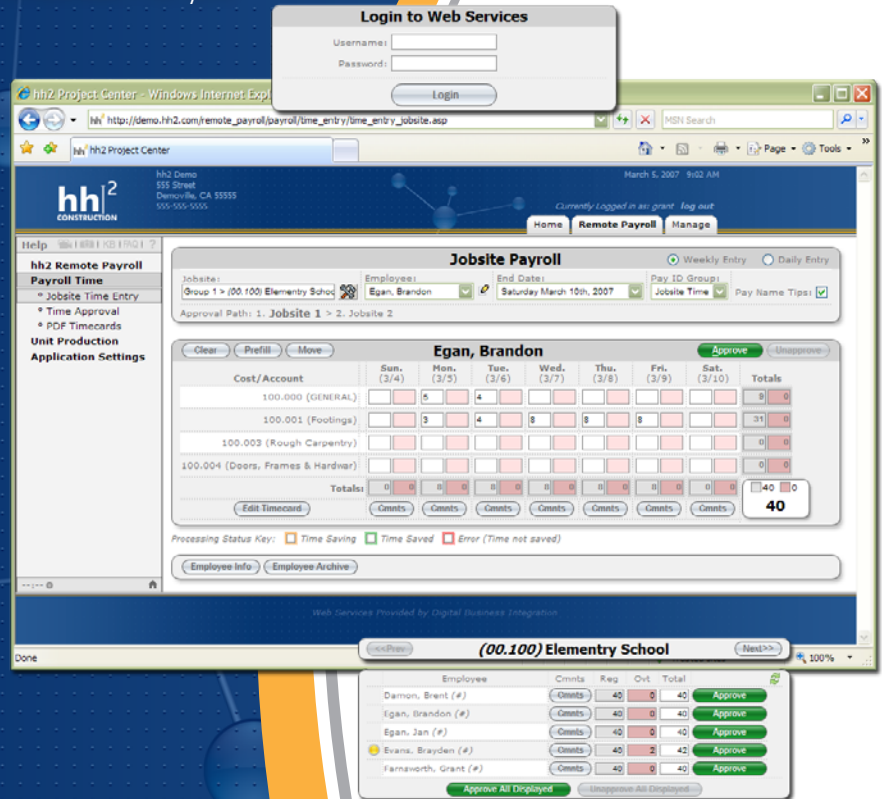
If you're still handwriting and faxing in timesheets, here's a solution that will make your payroll process much easier. hh² Remote Payroll turns any web browser into a powerful and easy-to-use timesheet. All you need is a computer with an active Internet connection.

- No more illegible timesheets.
- No more double-entry of job-costed payroll data.
- No more accounting code problems.
- No more error prone inefficiencies.

Using hh² Remote Payroll is simple. Users login with a username and password to a secure website. Timesheet information is filled out and submitted using intuitive forms. Payroll managers can then view and approve timesheet data with a click of a button. A host of reports can be generated in real-time to view needed payroll data.

With hh² Remote Payroll, there are no software, hardware or IT infrastructure costs in order to take full advantage of using it. You pay one low monthly subscription fee and that's all. With plans starting as low as \$37.50 per month, cost savings add up fast.

To learn more about what hh² Remote Payroll can do for your company, please call us or visit us on the web to schedule a brief demonstration. We're confident you'll find out what users of hh² Remote Payroll already know—there's no better way for construction companies with remote job sites to keep time.



www.hh2.com

**1-877-hh2WEBS
(442-9327)**

sage
software
Development Partner

SAGE TIMBERLINE OFFICE



The Online Advantage:

Because hh2 Remote Payroll is a hosted solution accessible anywhere you have an active Internet connection, you never have to worry about software, hardware, IT infrastructure, installation, upgrade or maintenance costs. It's all done automatically behind the scenes.

There are no big upfront investments and no long term contracts to tie you down. In addition, because all your payroll data is stored in a secure data center in one unified database, you never need to worry about backing up, syncing or keeping your data up-to-date. All information is updated in real-time which goes a long way toward keeping everyone well informed and working together on the same page.

The Technological Advantage:

hh2 Remote Payroll feels like you're using software installed on your computer even though you're simply using a Web-browser. This is made possible through using the latest technological advances including:

- Windows Server 2003
- SQL Server 2005
- AJAX
- XML
- Web Services
- .NET Framework 2.0
- Windows Clustering
- Storage Area Networking

The Secure Advantage:

With hh2 Remote Payroll, all of your data is hosted offsite in a secure data center. This offers many security and high availability advantages over hosting the data yourself, such as:

- Automatic Encryption
- IP Address Filtering
- Access Logs
 - Configurable Password Protection
 - 24 Hour Manned Datacenter
 - Redundant Utility Connections
 - Redundant Internet Connections
 - N+1 UPS Battery Backup
 - Diesel Generator Power Backup

Key Features:

- Customizable Time Entry
 - Weekly Timecard
 - Simple Timecard Interface
 - Ideal for self time entry
 - Ideal for long lasting jobs
 - Daily Timecard
 - Simple Timecard Interface
 - Ideal for daily entry
 - Ideal for large jobs
 - Data Grid
 - Spreadsheet-Like Interface
 - Similar to Timberline's Time Entry
 - Ideal for Rapid Entry by trained time entry clerks
 - Ideal for employees who work on new jobs every week
- Custom Approval Paths
 - Multiple Approval Levels
 - Customizable Approval Options for Each Level
 - Choose Available Job Cost Codes
 - Choose GL Accounts
 - Choose Departments
 - Choose Equipment
- Gather, Code and Approve:
 - Employee Time
 - Equipment Time
 - Unit Production
- Real Time Reporting
 - Report on Time as it is entered
 - Extend Reporting out to the field
 - Catch Problems before they become emergencies
 - Analyze Trends
 - Job Cost History
 - Employee History
 - Production History
- Timberline Integration
 - Sync Tool synchronizes data from Timberline into hh2 Web Services
 - Jobs, Extras, Cost Codes
 - GL Accounts
 - Employees
 - Certified Class
 - Pay ID's
 - Departments
 - Equipment
 - Simple Export Brings Data Back In
 - Configurable to match any time entry view in Timberline
 - Configurable to allow for integration with other software and/or services
 - Export Log ensures you have a record of all your exports and the ability to recover or re-export your data should the need arise